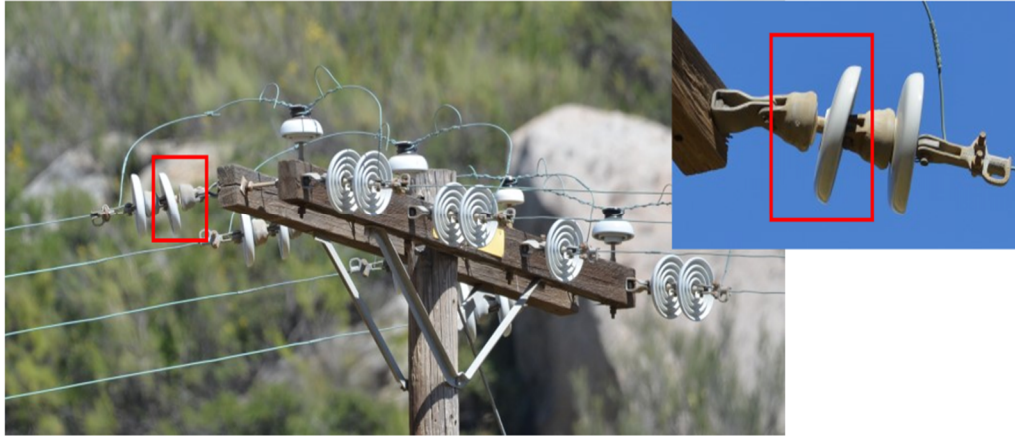


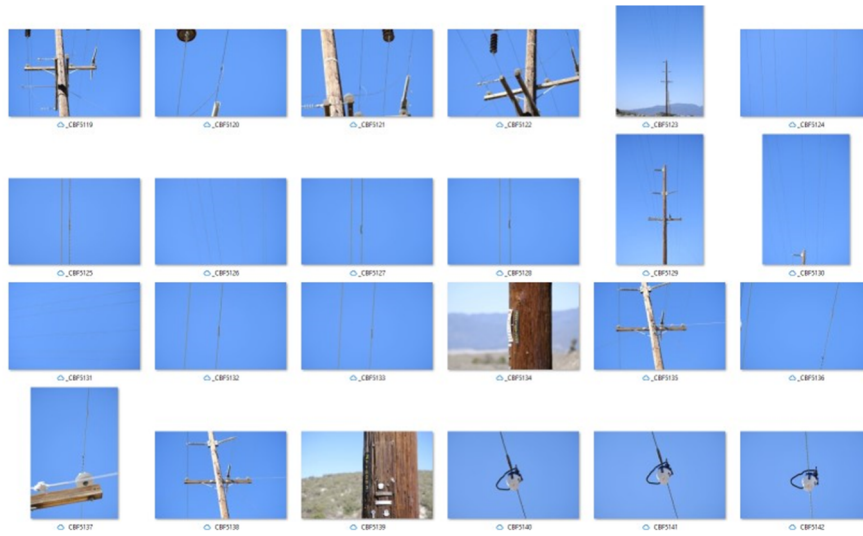
- b) Please provide the results of SDG&E's findings after the 2-year demonstration referenced above.
- i. Broken ceramic insulator found on C448 that was not detected during routine patrols – replaced



- ii. Burned insulator found at Warners Substation on stepdown to circuit 211 – replaced



iii. Multiple wire splices with internal PD on C211 - replaced



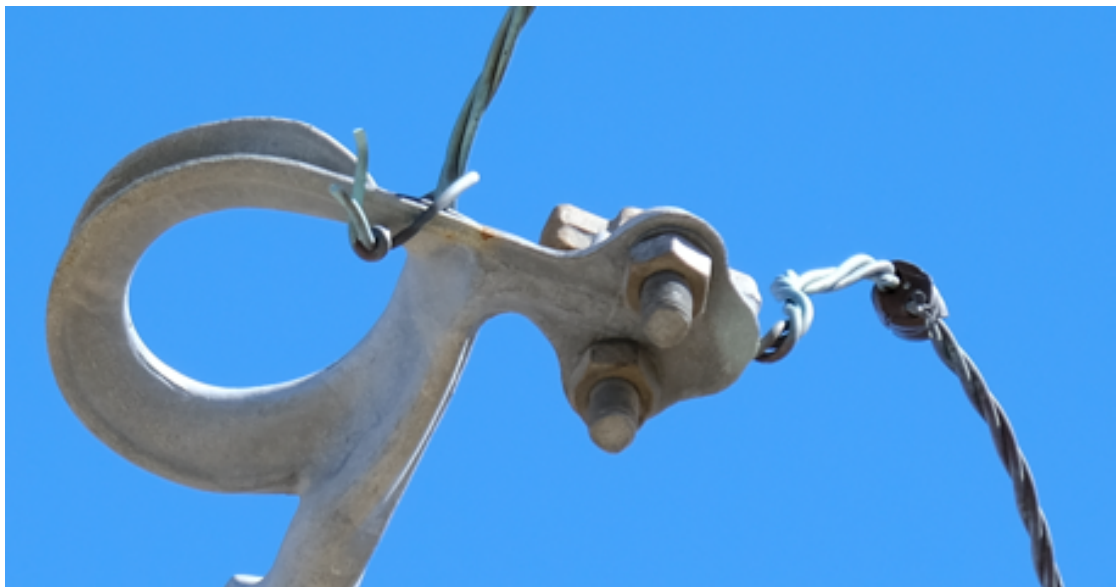
iv. Damaged insulator leaking to crossarm on C211 – replaced



- v. Bird nest on buck pole C211 - removed



- vi. Birdcaged jumper on C211 – replaced



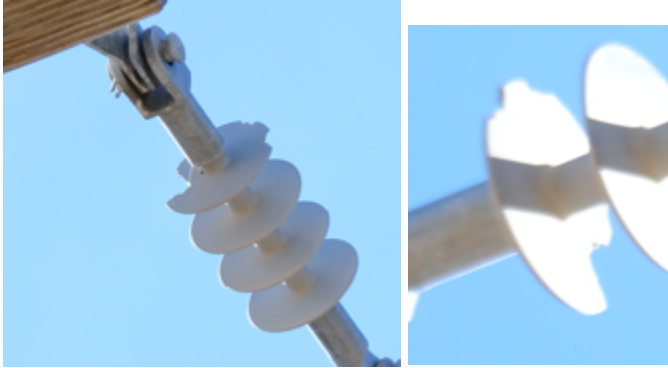
- vii. Damaged conductor on C211 – loose (not broken) strand – deemed not structural damage by QEW



- viii. Bird-caged conductor found on C211 not detected during routine patrols – deemed not structural damage by QEW



- ix. Animal damage to dead-end insulator on C211 - replaced



- x. Multiple instances of cosmetic wire slap damage to conductor – deemed not structural damage by ETS

